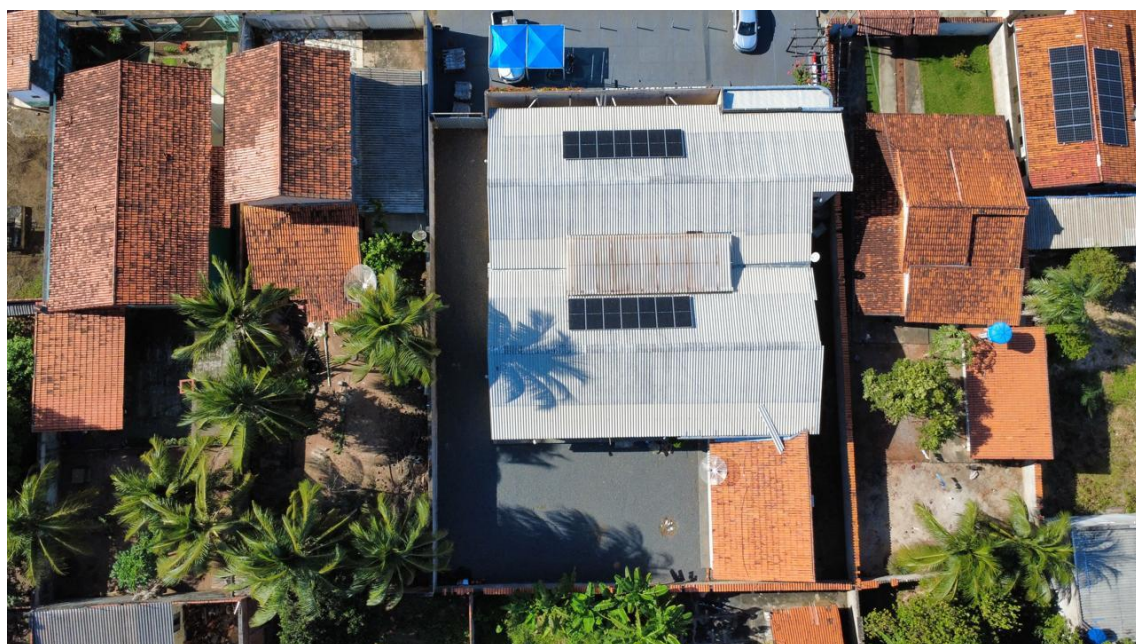




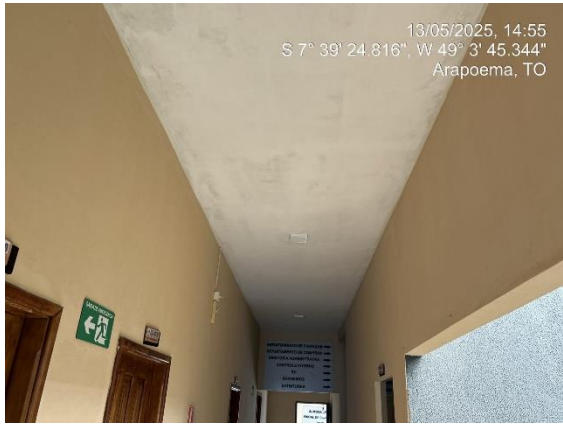
RELATÓRIO FOTOGRÁFICO

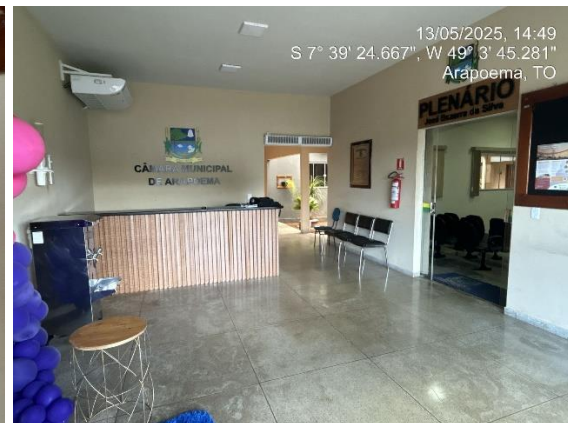
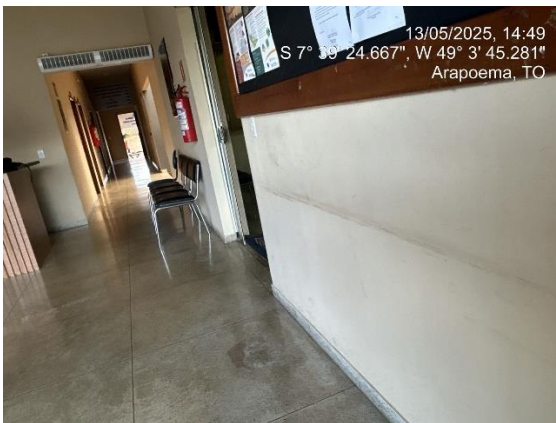
Fotos do Prédio da Câmara Municipal de Vereadores de Arapoema – TO.

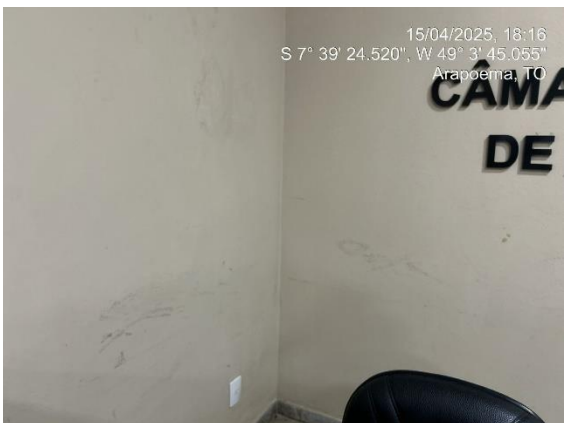












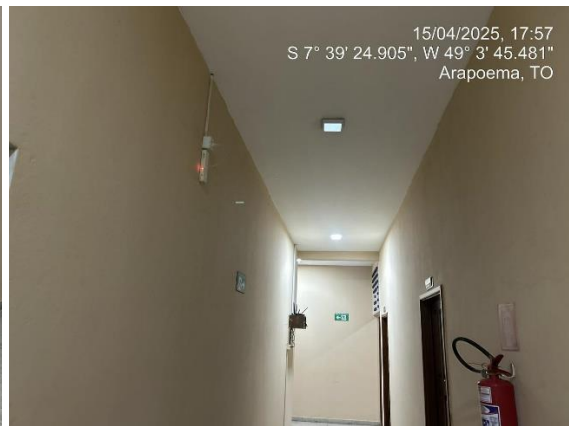
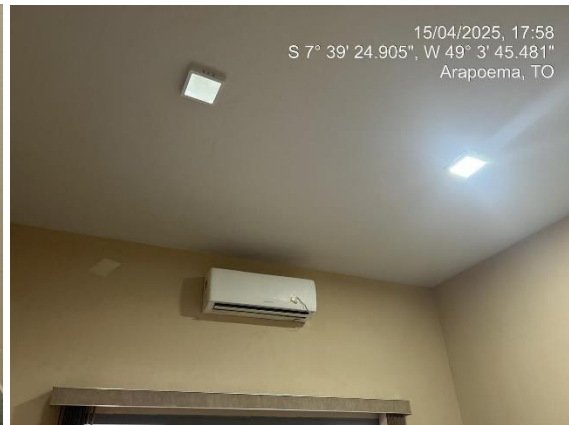


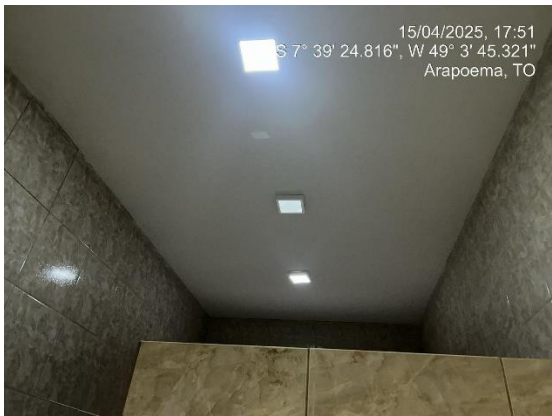


















15/04/2025, 17:44
S 7° 39' 24.526", W 49° 3' 45.017"
Arapoema, TO



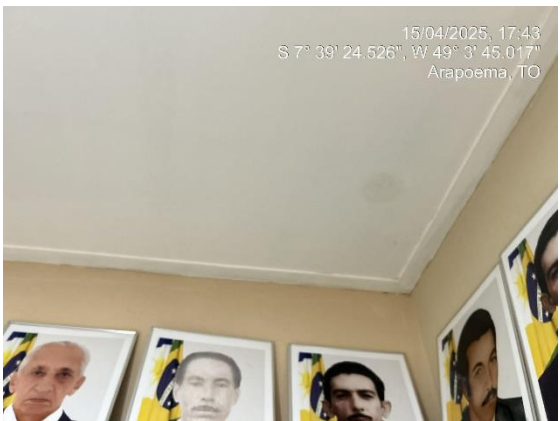
15/04/2025, 17:44
S 7° 39' 24.526", W 49° 3' 45.017"
Arapoema, TO



15/04/2025, 17:43
S 7° 39' 24.526", W 49° 3' 45.017"
Arapoema, TO



15/04/2025, 17:43
S 7° 39' 24.526", W 49° 3' 45.017"
Arapoema, TO



15/04/2025, 17:43
S 7° 39' 24.526", W 49° 3' 45.017"
Arapoema, TO



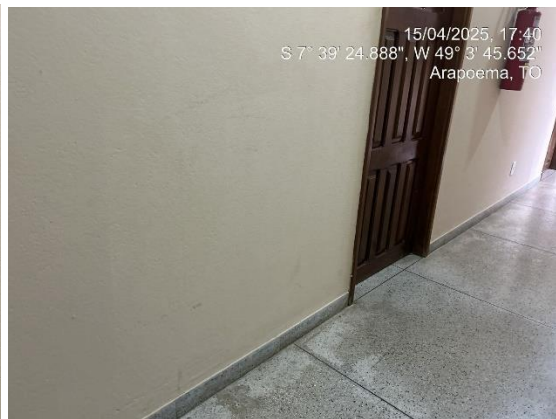
15/04/2025, 17:43
S 7° 39' 24.526", W 49° 3' 45.017"
Arapoema, TO

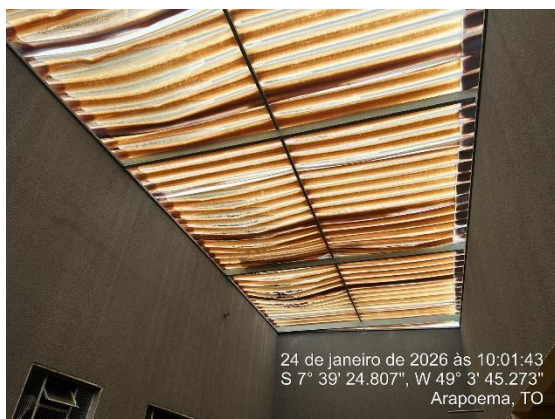
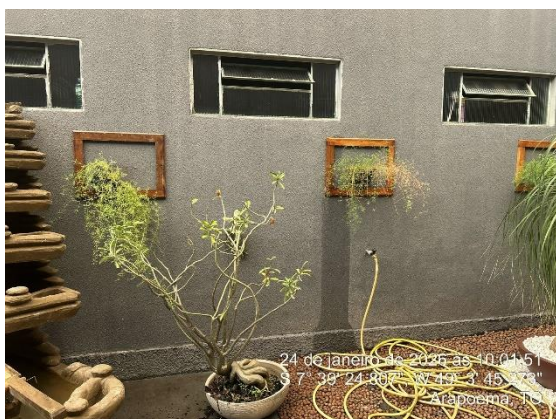
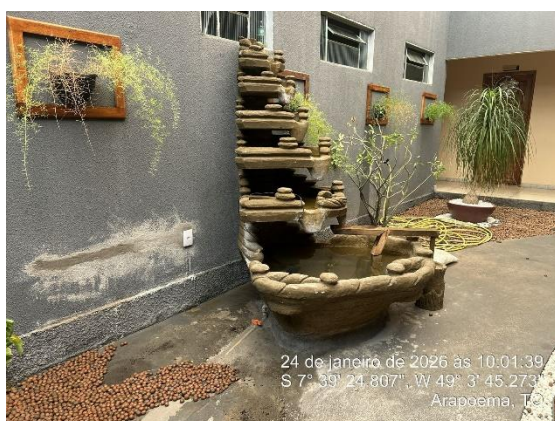


15/04/2025, 17:42
S 7° 39' 24.526", W 49° 3' 45.017"
Arapoema, TO



15/04/2025, 17:43
S 7° 39' 24.526", W 49° 3' 45.017"
Arapoema, TO





Fonte: Autor.

Arapoema – TO, 06 de Fevereiro de 2026.

Eng. Civil Douglas de S. Proença

CREA: 309837D/TO